



## PIPELINE PURPOSE, SAFETY & RELIABILITY

Safety is more than manuals and rules. At Eastern Gas Transmission & Storage (EGTS), safety is a way of doing business. EGTS is committed to safe operations, safe facilities and safety-minded employees.

### PURPOSE

EGTS operates assets in your area that could include natural gas pipelines, compressor stations, storage wells and other facilities. These facilities are used to deliver natural gas to local gas distribution companies and large consumers. Pipelines have proven to be one of the safest methods of transporting energy. However, they can be damaged by earth disturbance activities such as excavation, drilling, blasting, land movement and vandalism. Interference with pressurized pipelines and connected equipment by untrained persons can be very dangerous. While it is highly unlikely that these facilities will experience problems, we are providing this safety information so you will know what to do if problems occur.

### SAFETY & RELIABILITY

The two major hazards for pipelines are third-party damage and corrosion. The EGTS system uses pipelines made of only high strength materials that meet or exceed the standards of the natural gas industry and federal regulations. Pipelines that run through populated areas use pipes with a greater wall thickness to provide an even higher level of protection.

To protect pipe, it is coated with special materials that help block corrosion. The welds that join pieces of pipe into a single long line are wrapped with a special protective material before the pipeline is placed in the ground. All EGTS pipelines are tested and inspected regularly to identify potential problems. Our operational emphasis on safety also involves regular aerial patrols and routine ground patrols for a more detailed line examination.

EGTS maintains an Integrity Management Program that embraces the U.S. Department of Transportation's goal of improving safety and raising public confidence in the natural gas industry. To access additional information about EGTS's Integrity Management Program, please visit <https://www.bhegts.com/safety-and-environment/operational-safety/PIM> or call 681-842-3200.

## EMERGENCY COMMUNICATION & RESPONSE

### REPORTING & COMMUNICATION

In any emergency, accurate communication and quick cooperation between EGTS and fire or police units will be essential. When EGTS initially communicates with any emergency response units, we will indicate the facilities involved, the design and operating parameters, the nature of the product involved and the details of our response to the situation. Normally we will dispatch personnel to the area immediately. We also will establish and maintain mobile communications with the site until the emergency has been resolved.

Usually any emergency or potential emergency will be detected and reported immediately through EGTS's ongoing monitoring of its facilities. However, there may be situations when emergency units may report emergencies where our facilities are directly or indirectly involved.

If you are reporting such an emergency to EGTS, please provide all the data you can. Information about the facility, the nature of the product, the location, and the observed condition of our facilities is needed. Your information will be used to determine our initial response to the situation.

### EASTERN GAS TRANSMISSION & STORAGE EMERGENCY RESPONSE

When EGTS gets a report of an emergency involving our facilities, we:

#### EMERGENCY CONTACT:

1-888-264-8240

#### PRODUCTS/DOT GUIDEBOOK ID#/GUIDE#:

Natural Gas	1971	115
Natural Gasoline	1203	128
Propane	1075/1978	115

#### WEST VIRGINIA

#### COUNTIES OF OPERATION:

Barbour	Monongalia
Boone	Pleasants
Calhoun	Ritchie
Clay	Roane
Doddridge	Taylor
Gilmer	Tyler
Harrison	Wetzel
Kanawha	Wirt
Lewis	Wood
Marion	Wyoming
Marshall	

*Changes may occur. Contact the operator to discuss their pipeline systems and areas of operation.*

- Identify the type of facility and the exact location. We also gather information on injuries, if any.
- Act immediately to notify emergency response agencies and organizations in the area if necessary.
- Isolate the affected facility and take all possible steps to stop gas flow at the point of the leak.
- Designate a single company person as contact for all outside agencies and organizations.

When our personnel arrive at the scene of the problem, we ask responding emergency units to:

- Establish perimeter control around the affected area.
- Communicate and work with our designated company spokesman in responding to the situation.

## GUIDELINES FOR RESPONDING EMERGENCY UNITS

Escaping natural gasoline presents both fire and no-fire emergency situations.

When there is a fire:

- Do not attempt to extinguish the fire unless life is in danger.
- Protect the area surrounding the fire.

When no fire is involved:

- Remove any open flame or other possible sources of ignition from the area and prohibit smoking.

- Position equipment at a safe distance and have all personnel in protective clothing.
- Control any secondary fires.
- Assist with personal injuries and coordinate evacuation, if necessary.
- Assist EGTS personnel with access to valve locations as needed.
- If appropriate, help with news media.
- Please remember that shutting off the product flow is the responsibility of

Eastern Gas Transmission & Storage. Non-company personnel should never attempt to use valves and controls.

For detailed information, visit the National Pipeline Mapping System at [www.nmps.phmsa.dot.gov](http://www.nmps.phmsa.dot.gov) or contact the appropriate EGTS representative listed on the following page.

## Five Examples of Eastern Gas Transmission Pipeline/HCA markers



1. Vent Pipe



2. Linemarkers and cathodic protection test station



3. High-consequence area entrance or exit marker (arrow on top)



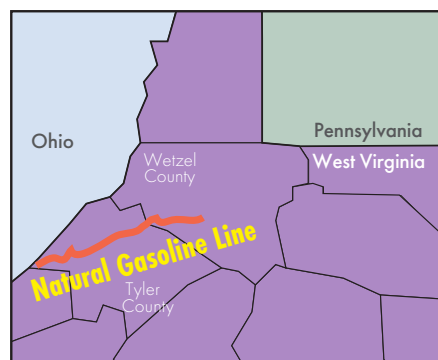
4. HCA line-of-sight marker



5. HCA marker and cathodic protection test station

## PIPELINE PURPOSE, SAFETY & RELIABILITY (NATURAL GASOLINE)

EGTS uses its 27-mile natural gasoline liquid pipeline system to transport natural gasoline from its Hastings Extraction Plant in Wetzel County, West Virginia, south to its Bens Run Storage and barge-loading facility in Tyler County, West Virginia.



Owned and operated by EGTS, natural gasoline line G-143 is located in Wetzel County and runs from the Hastings Extraction Plant to the Galmish loading facility. EC-3 is located in both Wetzel and Tyler counties and natural gasoline lines EC-4 and EC-5 are located in Tyler County. EC-3 begins at the Extraction Plant near Pine Grove and runs southwestward to the storage tank at Bens Run. EC-4 and EC-5 are short pipelines that transport the natural gasoline from the storage tank to the barge-loading dock on the Ohio River. The company uses pumps to transport the natural gasoline. The Extraction Plant has two variable-speed pumps. There is a single transfer pump at the storage and loading facility that transfers the natural gasoline into a barge docked on the Ohio River.

Pipelines EC-3 and G-143 are equipped with a leak-detection control system.

A sophisticated computer evaluation system constantly monitors pressure and flow at each end of the pipeline. Upon a leak or break, a pressure drop and flow change would be detected by the system, which would then send an alarm signal for the Hastings Extraction Plant operators.

## PIPELINE PURPOSE, SAFETY & RELIABILITY (PROPANE)

EGTS uses its propane pipeline system to transport liquid propane from its Hastings Extraction Plant in Wetzel County, W. Va., north to its Hutchinson Station in Allegheny County, Pa.

Owned and operated by EGTS, liquid propane line G-134 is located in Wetzel County and liquid propane line G-136 starts in Wetzel County and continues to Greene, Washington and Allegheny counties in Pennsylvania.

Pipelines have proven to be one of the safest methods of transporting energy. However, they can be damaged by earth disturbance activities such as excavation, drilling, blasting, land movement and vandalism. Untrained persons that interfere with pressurized pipelines can create dangerous conditions. While it is highly unlikely that these facilities will experience problems, we are providing this safety information so you will know what to do if problems occur.



## COMPANY REPRESENTATIVES

### In Barbour, Doddridge, Harrison, Marshall, Marion, Monongalia, Taylor, Tyler and Wetzel counties:

Jeffrey Light / Jason Drummond  
Rt. 2 Box 145  
Bridgeport, WV 26330  
681-842-3098 / 304-203-9235

Jon Freeland / David Gum  
37 Energy Drive  
Jane Lew, WV 26378  
304-884-1111 / 304-884-1125

Shawn Davis  
HC 69 Box 11  
West Union, WV 26456  
304-203-2158

Randy Shaver / Jason Drummond  
Lightburn Station  
6486 Old Mill Rd.  
Jane Lew, WV 26378  
304-884-2412 / 304-884-2410

Tyler Moyers / Jeffrey White  
24 hr Stations - Salem  
6480 Old Mill Road  
Jane Lew, WV 26378  
304-884-2429 / 304-203-9235

Brandon Tingler / Shawn Davis  
24 Hr. Station - Smithville  
Rt.16 & 47 Intersection Station Rd.  
Smithville, WV 26178  
304-477-3366 / 304-203-2158

### In Boone, Logan, McDowell, Mercer, Raleigh and Wyoming Counties:

Richard Adkins / David Gum  
Chelyan Station  
116 Gas Plant Rd  
Cabin Creek, WV 25035  
304-308-9865 / 304-269-6935

Richard Adkins / David Gum  
Oscar Nelson Station  
P.O. Box 526  
Brenton, WV 24818  
304-308-9865 / 304-269-6935

### Extraction Plant

Alan Shreves  
P.O. Box 370  
Pine Grove, WV 26419  
304-889-3836

### In Calhoun, Clay, Gilmer and Lewis Counties:

Brandon Tingler / Shawn Davis  
24 Hr. Station - Smithville  
Rt.16 & 47 Intersection Station Rd.  
Smithville, WV 26178  
304-477-3366 / 304-203-2158

Chris Todd / Jason Drummond  
Sweeney Station  
1835 Fink Creek Rd.  
Camden, WV 26338  
304-269-6996 / 304-884-2410

Tyler Moyers / Jeffrey White  
24 hr Stations - Weston  
6480 Old Mill Rd  
Jane Lew, WV 26378  
304-884-2429 / 304-203-9235

Todd Dorsey / David Gum  
Cornwell Station  
200 River Haven Rd.  
Clendenin, WV 25045  
304-548-4940 / 304-884-1125

Shawn Davis  
LL Tonkin Station  
HC 69 Box 11  
West Union, WV 26456  
304-203-2158

Randy Shaver / Jason Drummond  
Lightburn Station  
6486 Old Mill Rd.  
Jane Lew, WV 26378  
304-884-2412 / 304-884-2410

### In Kanawha and Roane Counties:

Richard Adkins / Dave Gum  
Oscar Nelson Station  
P.O. Box 526  
Brenton, WV 24818  
304-308-9865 / 304-269-6935

Todd Dorsey / David Gum  
200 River Haven Rd.  
Clendenin, WV 25045  
304-548-4940 / 304-884-1125

### In Tyler County:

Tyler Moyers / Jeffrey White  
24 hr Stations - Salem  
6480 Old Mill Road  
Jane Lew WV 26378  
304-884-2429 / 304-203-9235

### In Ritchie County:

Brandon Tingler / Shawn Davis  
24 Hr. Station - Smithville  
Rt. 16 & 47 Intersection Station Rd.  
Smithville, WV 26178  
304-477-3366 / 304-203-2158

### In Randolph County:

Tyler Moyers / Jeffrey White  
24 hr Stations - Weston  
6480 Old Mill Rd  
Jane Lew, WV 26378  
304-884-2429 / 304-203-9235

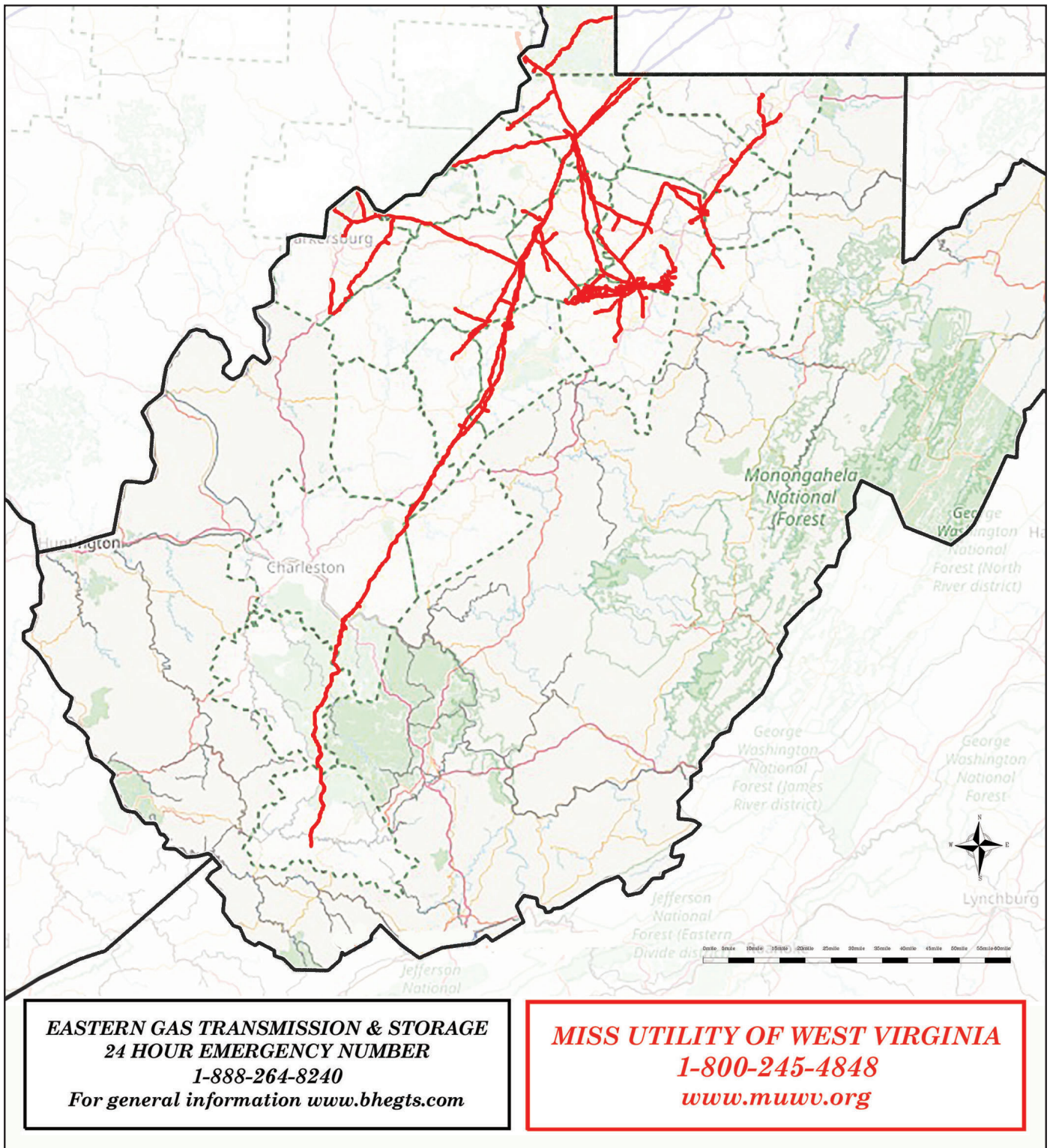
### In Wetzel County:

Matt Pape / Shawn Davis  
Burch Ridge Station  
6411 Burch Ridge Road  
Proctor, WV 26055  
304-455-1322 / 304-203-2158



## Eastern Gas Transmission and Storage

Shown below is a state overview map of EGTS lines. For detailed information, visit the National Pipeline Mapping System at [www.nmps.phmsa.dot.gov](http://www.nmps.phmsa.dot.gov) or contact the appropriate EGTS representative listed on the previous page.



"This map is for reference and should not be copied and distributed without prior written consent. The pipeline operator does not warrant accuracy, sufficiency, completeness of this drawing or map, for any purpose and reliance here on, and use here of, at the risk of the user to agree to hold harmless and indemnify the owner from and against any and all liability in connection with its use."